



ROUND

Handrail Diameter & Part no.

- ___ 1.5" Diameter AHR1500-()
- ___ 2" Diameter AHR2000-()
- ___ 3" Diameter AHR3000-()

Finish

- ___ **Stainless Steel**.....(S) (SP)
 - ___ **Bronze** (#385 alloy).....(B) (BP)
 - ___ **Yellow Brass** (#260 alloy)...(YB) (YBP)
- Additional charges apply *

Indicate Preference
Brushed Polished*

Custom Options

- ___ Bent End(s) AHRBE
- ___ Bullet (Rounded) End(s) AHRBC
- ___ Specialty Spacer Designs (by quotation)

Handrail Spacer Type

- ___ **Standard** Spacer & Stud
- ___ **Removable** Spacers (In-Cab Installation)

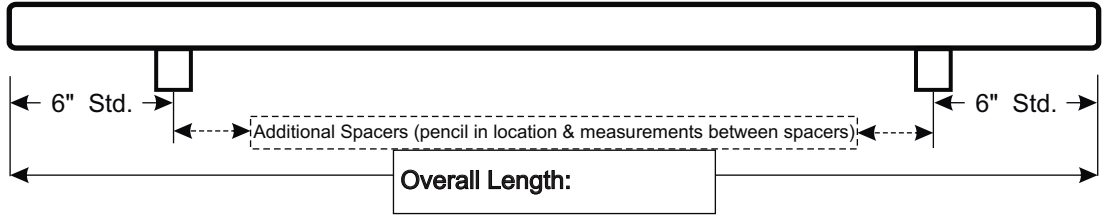
Architectural Finishes

- ___ S/S Diamond-Tex (7-GM) AHR1500DX
- ___ Knurled cross-cut (applied) AHRKF
shade area(s) on drawing to be knurled

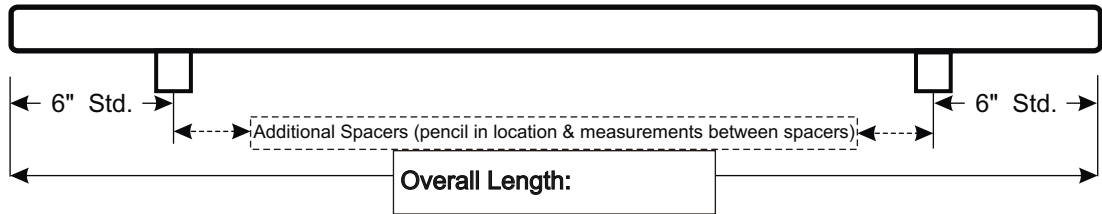
Handrail Worksheet

Standard

Qty. _____

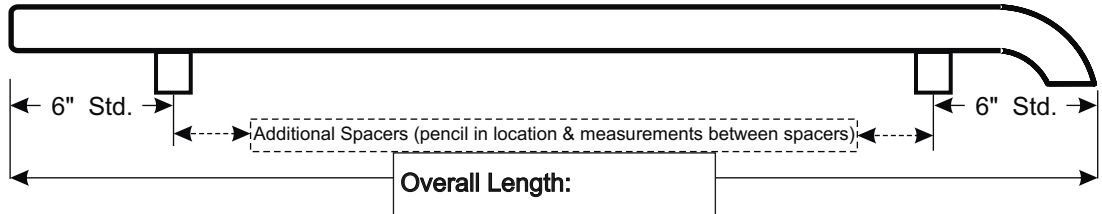


Qty. _____



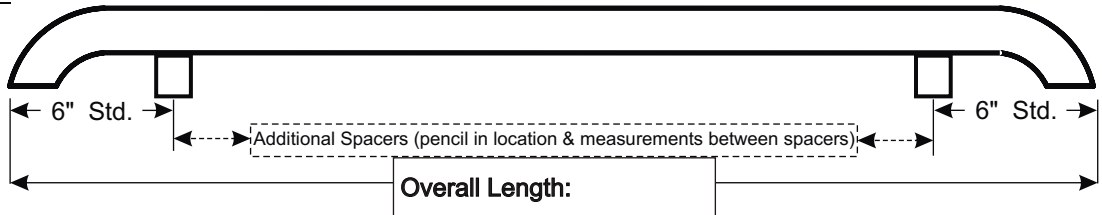
1 End Bent

Qty. _____

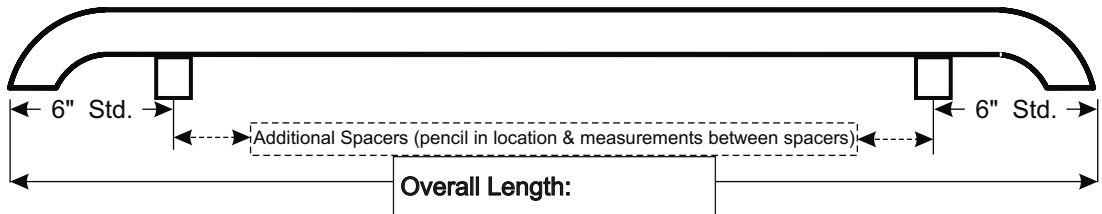


Both Ends Bent

Qty. _____



Qty. _____



Please Photocopy and Fill in Specifications

Company: _____

SHIP TO ADDRESS: _____

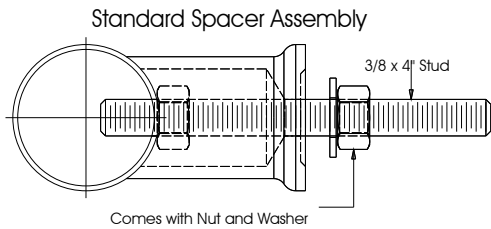
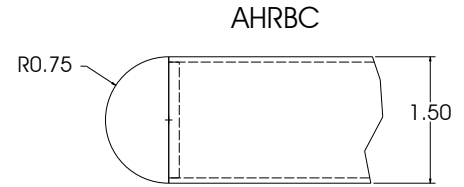
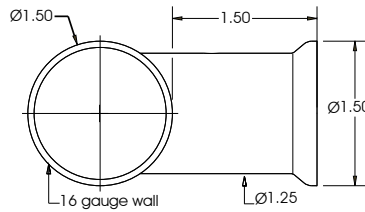
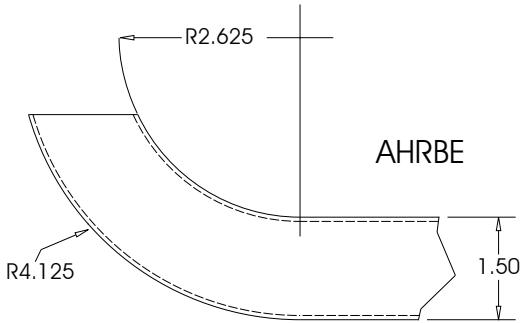
Job Name: _____

Adams' Order # (SAP): _____ P.O.#: _____

Notes: _____

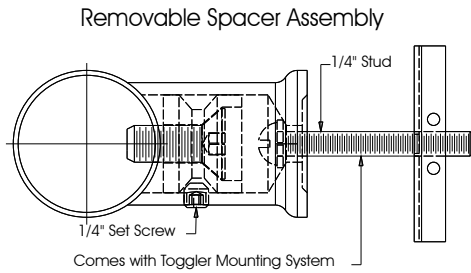
Contact Name: _____ **Phone #** (____) _____ - _____ **Fax #** (____) _____ - _____

AHR1500 Engineering Data



PULL-OUT VALUES for 3/8" STUD

Handrail Thread-lock fastener engineered test data
 Pull-out values for removal of threaded fasteners from Lustre Products' handrails = 1509 lbs

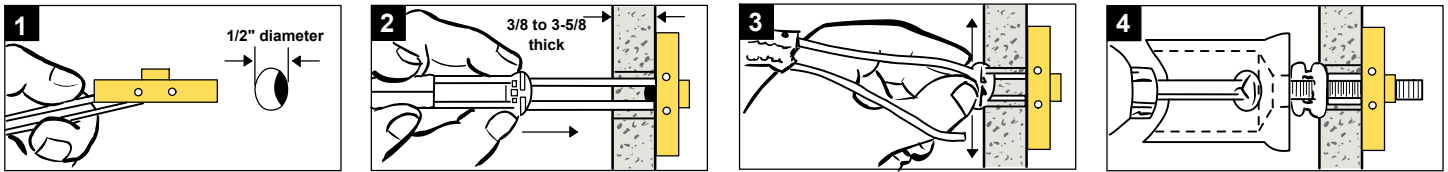


PULL-OUT VALUES for 1/4"-20 BOLT

265 lbs (120 kg) ultimate tensile load in 1/2" drywall
 306 lbs (162 kg) ultimate tensile load in 5/8" drywall
 925 lbs (420 kg) ultimate tensile load in concrete block
 1,283 lbs (583 kg) ultimate tensile load in steel plate

Tests by independent test laboratory show ultimate load. Industry safety standards recommend 1/4 of the values for actual applications. Age and conditions of substrate will cause load values to vary.

REMOVABLE HANDRAIL SPACER INSTALLATION INSTRUCTIONS



ACTUAL WEIGHTS: Handrail physical weight calculations = 1.1 lbs per lineal foot (0.50 kg / 30.48 cm)
 Spacer assembly = 0.4 lbs (0.18 kg) per spacer

SHIPPING WEIGHTS: Average assembled and packaged shipping weight = 2.1 lbs per lineal foot of handrail (0.95 kg / 30.48 cm)

CARE & MAINTENANCE Brass & Bronze Handrail

PLEASE NOTE: These handrails & components are manufactured from solid brass or bronze tubing / round bar / flat bar. During the manufacturing process we have applied a lacquer spray coating to this product. It is intended to prevent initial oxidation of the product finish. Brass or Bronze is a HIGH MAINTENANCE FINISH. This coating is designed to wear off and allows for safe and cost effective removal. The Brass or Bronze finish can then be cleaned and maintained easily. It is NOT a clear coat baked finish which, when chipped, worn, or damaged, will oxidize locally and become permanent with no means of repair, blending or re-finishing. As the lacquer coating applied to your handrail(s) will wear, please note the following:

1. The original lacquer coating can be removed with standard xylene or lacquer thinner (available at most hardware stores - follow all related safety precautions)
2. Normal maintenance (polishing / buffing / scotchbrite stain finishing) procedures for Brass or Bronze will result in maintaining the #4 (brushed) or #8 (polished) finish.
3. You may prefer, at this time, to continue a program of hand maintenance to control oxidation as well as normal wear and tear.
4. If re-coating of the handrail is preferred, standard commercial spray lacquer is recommended as a versatile means of reducing the effects of oxidation.

As these handrails are a high contact / high abuse item within elevator cabs, they are warranted against defects in workmanship. The finish is not warranted as it is assumed that with Brass or Bronze, there will be a program of maintenance in place to control the effects of oxidation, including all aspects of normal use and abuse. The workmanship and quality of these products is a reflection of our dedication to you.... our customer.