



Cabs

Operating instructions

Page D1AAMUS.000
Version 01.20.2003
Approved SS/MM
Elevator Solutions Intl Inc.

Elevator Solutions International Inc. Cabs



01.2003

D1AAMUS

Elevator Solutions International Inc.

PO Box 987 · 7702 Fifth Avenue · Strother Field Industrial Park · Arkansas City KS 67005 · USA

Tel. 620-442-2510 · Toll 866-473-5266 · Fax 620-442-1599

<http://www.elevsol.com> · Email: info@elevsol.com

No part of this publication may be reproduced or translated, even in part, without prior written permission from Elevator Solutions International Inc.

We reserve the right to make alterations with respect to the specifications and figures in this manual.

Subject to change without notice!



Cabs

Page D1AAMUS.001
Version 01.20.2003
Approved SS/MM'
Elevator Solutions Intl Inc.

Operating instructions

Contents Page

1 General information prior to installation

1.1 Purpose	D1AAMUS.002
1.2 Liability and guarantee	D1AAMUS.002
1.3 Recommended tools and materials	D1AAMUS.003

2 Equipment description

2.1 Equipment description	D1AAMUS.004
---------------------------------	-------------

3 Installation

3.1 Positioning panel assemblies	D1AAMUS.005
3.2 Positioning return panels	D1AAMUS.007
3.3 Installing transom, ceiling, & canopy	D1AAMUS.009
3.4 Aligning & squaring cab panels	D1AAMUS.011
3.5 Plumbing cab entrance	D1AAMUS.012



Cabs

Page D1AAMUS.002
Version 01.20.2003
Approved SS/MM
Elevator Solutions Intl Inc.

Operating instructions

1 General information prior to installation

1.1 Purpose

This product instruction provides a brief description of the features and components of the cab. This product instruction also provides Field Personnel with information on installation procedures, operation checks, and adjustments.

1.2 Liability and guarantee

This instruction booklet is written for people who are familiar with elevator servicing and installation. Competent knowledge of elevators is essential.

Elevator Solutions International Inc. accepts no responsibility for damage caused as a result of actions other than those stated in these operation instructions.

The Elevator Solutions International Inc. guarantee may be void if parts other than those described in these instructions are installed. Always consider safety first and follow your company's safety and installation procedures.



Cabs

Operating instructions

Page D1AAMUS.003
Version 01.20.2003
Approved SS/MM
Elevator Solutions Intl Inc.

1 General information prior to installation

1.3 Recommended tools and materials

Recommended tools and materials

Prearrange to have the following tools and materials available when installing cab equipment.

- 3/4 inch open end wrench
- Flat head screwdriver
- Phillips head screwdriver
- 2-1/2 inch hole saw
- 9/16 inch wrench/socket
- 7/16 inch wrench/socket
- 5/32 inch allen wrench
- Step ladder
- Drill motor
- Hammer
- Square
- Level or plumb
- Measuring device



Cabs

Page D1AAMUS.004
Version 01.20.2003
Approved SS/MM
Elevator Solutions Intl Inc.

Operating instructions

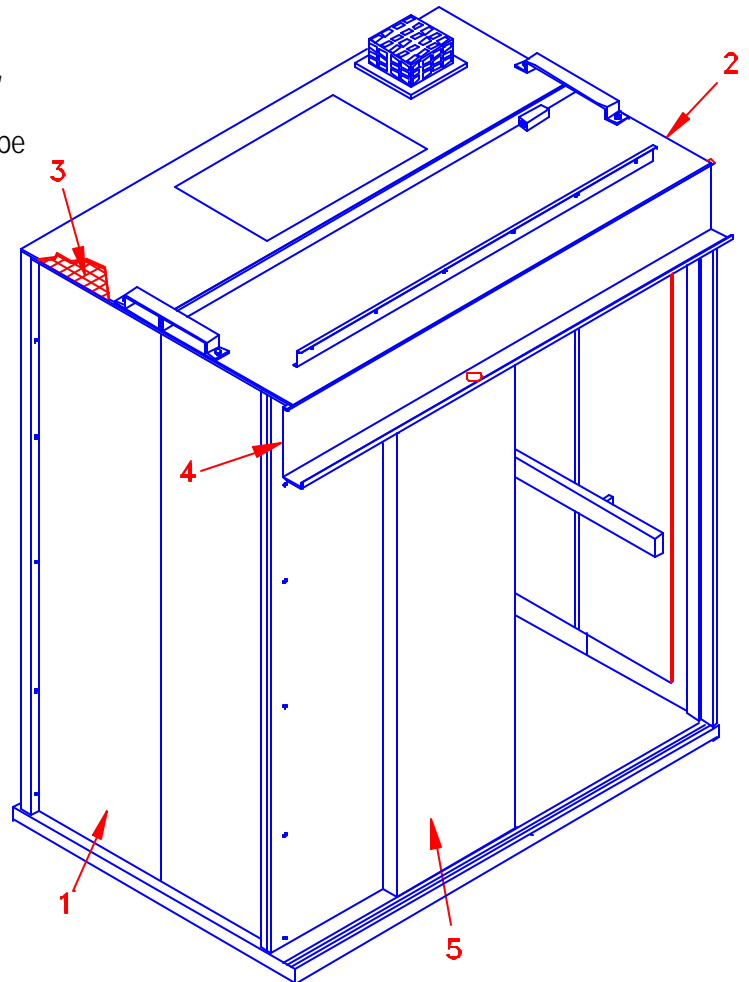
2 Equipment description

2.1 Equipment description

Before you can successfully install Cab equipment, identify items received and compare to the contract-specific Bill of Materials. If all items cannot be accounted for, contact Elevator solutions international inc.'s customer service.

- Cab side walls/panels (1)
- Canopy (2)
- Drop ceiling (3)
- Transom (4)
- Front return panels (5)
- Cab hardware

Make sure the actual color of cab panels are as specified on the Bill of Materials.



Plan ahead for assembling cab by completing the following:

- Check drawings and locate all cab parts
- Stage cab parts in front of hoistway
- Provide for adequate lighting in the hoistway
- Check the cab floor thickness in case any adjustments must be made
- Prepare panels for installation by peeling back protective tape far enough to expose joint area.



Cabs

Page D1AAMUS.005
Version 01.20.2003
Approved SS/MM
Elevator Solutions Intl Inc.

Operating instructions

3 Installation

3.1 Positioning panel assemblies

1. Maneuver rear panel assembly (1) onto car platform (2).
2. Position the panel assembly in the approximate finished location to the rear of the platform and centered postwise on the platform. Braces may be removed once the panels are ready to be installed.

Panel assemblies are heavy and awkward. The Mechanic/Helper Team must communicate and work together safely. Also, care must be taken to protect the appearance of the cab finish.

3. Position one side panel assembly (3) in location with the bolt heads (6) on locking angle (5) aligned with keyways in rear panel assembly (1).
4. Raise locking angle (5) on side panel assembly (3) until bolt heads (6) are aligned with the keyholes in rear panel assembly.
5. Insert bolt head (6) fully into keyhole slots of rear panel assembly (1) until side panel assembly makes contact with rear panel assembly.

Before attaching opposite side panel assembly to rear panel assembly on side-opening doors:

6. Drive down the locking angle (5) to secure rear panel (1) and side panel (3) together
7. Position opposite side panel assembly (11) and attach to rear panel assembly in the same manner.



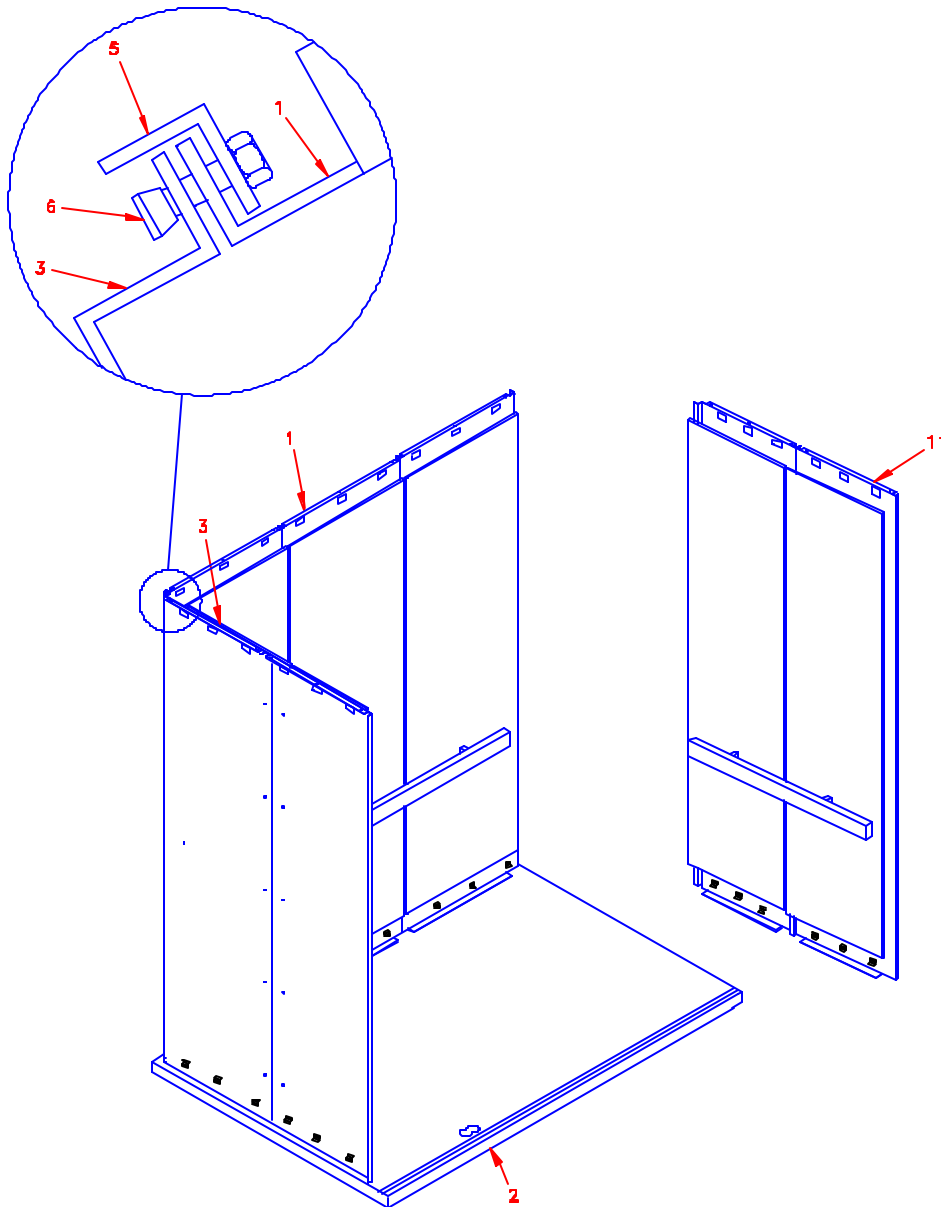
Cabs

Page D1AAMUS.006
Version 01.20.2003
Approved SS/MM
Elevator Solutions Intl Inc.

Operating instructions

3 Installation

3.1 Positioning panel assemblies



Positioning side panel with strike jamb

Subject to change without notice!



Cabs

Page D1AAMUS.007
Version 01.20.2003
Approved SS/MM
Elevator Solutions Intl Inc.

Operating instructions

3 Installation

3.2 Positioning return panels

Position cab return panels for assembly as follows:

1. Align return panel (1) containing the travel cable inlet hole (2) with the daylight line (3) marked on sill (4).

The daylight lines define the opening for the cab.

2. Loosely fasten return panel(s) (1) to side wall panels (5) with hardware provided. Do not tighten securely at this time.
3. Attach strike jamb (6) to side wall panel (7) with hardware provided.
4. Align the outside edge of the return jamb with the inner edge of the sill. The return jamb should butt against the sill and line up with the daylight line when properly positioned.

REMOVE KEYS TO ACCESS THE CONTROL PANEL

Keys to the control panel are tied, inside the tophole of the return panel. Remove the keys from this shipping location BEFORE transom/header is installed.



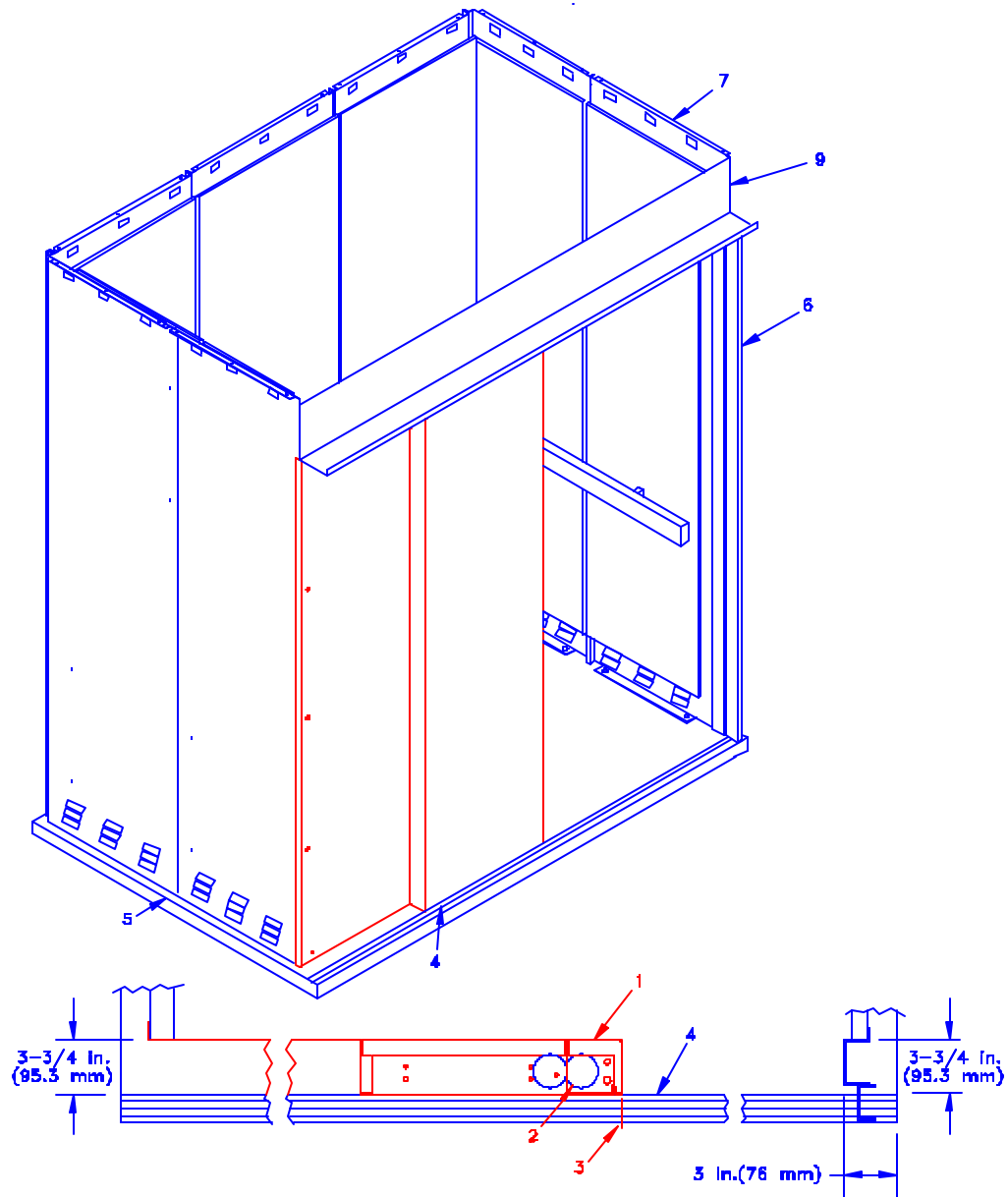
Cabs

Page D1AAMUS.008
Version 01.20.2003
Approved SS/MM
Elevator Solutions Intl Inc.

Operating instructions

3 Installation

3.2 Positioning return panels



Drilling travel cable hole

Subject to change without notice!



Cabs

Page D1AAMUS.009
Version 01.20.2003
Approved SS/MM
Elevator Solutions Intl Inc.

Operating instructions

3 Installation

3.3 Installing transom, ceiling, & canopy

Install cab transom, ceiling, and canopy as follows:

1. Place transom (2) on top of return panels for a center-opening cab, or on top of return panel (3) and strike jamb (4) for a single slide door.
2. Loosely fasten transom/header (2) to return panel (3) and strike jamb (4) with hardware provided. DO NOT tighten at this time.
3. Position the transom/header on return panel by locating the top and bottom holes in each end of the transom with the holes located in the side panels.

The top and bottom holes can be used as locating holes, the hardware installed in center holes at each end of transom should be secured afterward.

4. Secure transom to the side walls using hardware provided.
Important: You must install ceiling frame BEFORE installing canopy.
5. Install drop ceiling support brackets (5) onto drop ceiling frame (6) at recommended locations (5A, 5B, 5C, 5D).

6. Raise drop ceiling frame (6) into place on wall panels (7).
7. Insert support brackets (5) into slots at recommended wall panel location (A, B, C, D). Press drop ceiling frame (6) downward.
 - Downward pressure should lock brackets (5) into place.
 - The top of the support bracket (5) should be level with the top of the wall panel (7).
8. Lower canopy (9) from crosshead into position on top of the wall panels (7) and transom (2).
9. Loosely fasten canopy (9) with hardware provided. DO NOT tighten securely at this time.
10. Insert ceiling panels (8) into drop ceiling frame (6).

FOR USE WITH AMD OPERATOR

Illustration shown is for application with Standard Duty (PM), Heavy Duty (HPM/HPMS), and Super Duty (WM) Harmonic operators. If you are using Elevator solutions international inc.'s AMD Operator, there are two differences:

- the canopy back support (10) will not be present on the canopy (9)
- the transom (2) and the header (not shown) will be a single unit, not two separate pieces



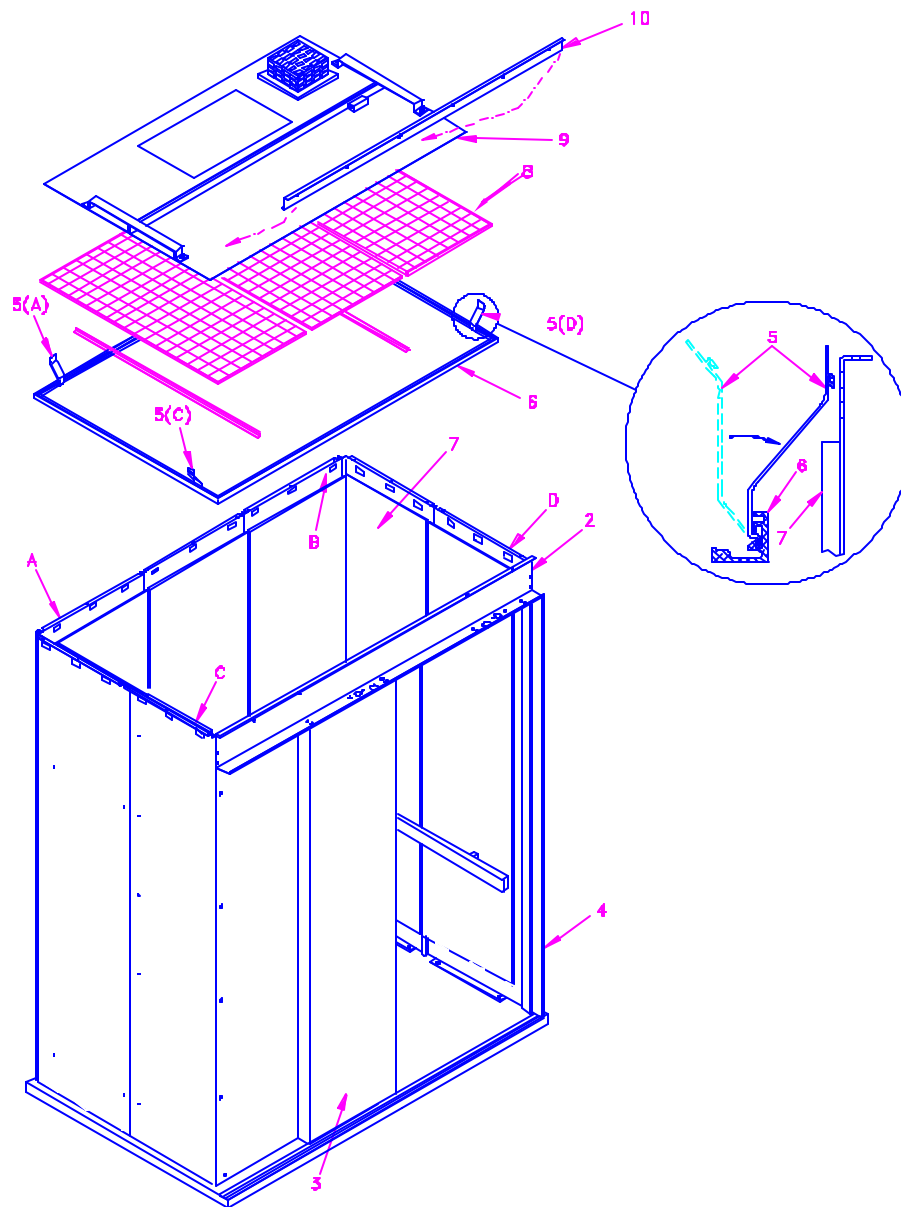
Cabs

Page D1AAMUS.010
Version 01.20.2003
Approved SS/MM
Elevator Solutions Intl Inc.

Operating instructions

3 Installation

3.3 Installing transom, ceiling, & canopy





Operating instructions

3 Installation

3.4 Aligning & squaring cab panels

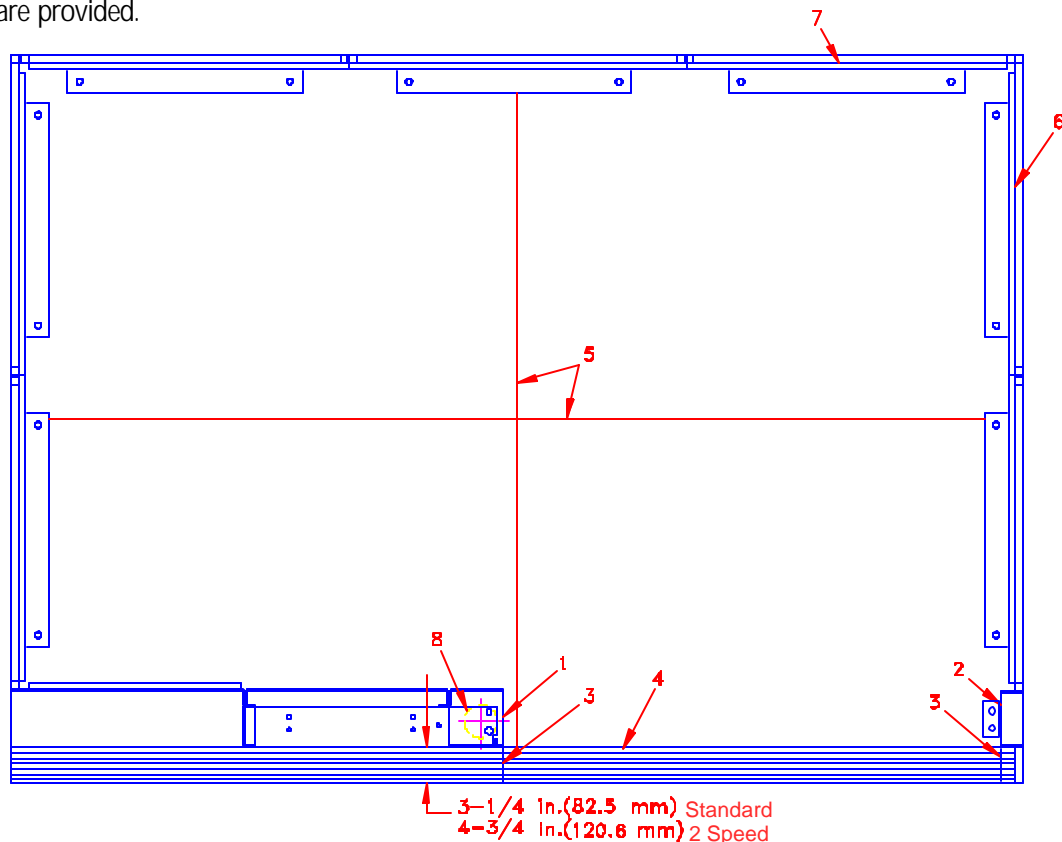
Align and square cab panels as follows.

1. Align return panel (1) and strike jamb offset (2) with daylight lines (3). Also position return panel flush with 3-1/4 inch [82.5 mm] car sill for single slide & center opening applications or 4-3/4 inch [120.6 mm] car sill for 2 speed applications (4) when door-to-sill dimension is 1-3/4 inch [44.4 mm].
2. Square return panel (1) with scribe lines (5) on platform, and secure return panel to platform with screws.
 - If the cab will be equipped with center-opening doors, square the opposite side return panel in the same manner.
 - If the cab will be equipped with a single slide or 2 speed door, align strike jamb with daylight line and square with sill. Then secure strike jamb with hardware provided.

Use a centerpunch to indent steel platform panel. Make sure screws seat flush with panel flange.

3. Secure strike jamb with hardware provided.
4. Align side wall panels (6) and rear wall panel (7) square with scribe lines on platform, and secure to platform with screws at a maximum of 22 inches [558.8 mm] on center. Drill and counter sink a minimum of 1-1/4 inches [31.8 mm] from steel wall interior line.
5. Locate travel cable inlet hole (8) in the base of return panel (1). Drill a 2-1/2 inch [63.5 mm] diameter hole (if not provided) in the platform directly beneath the hole (8) in the return panel (1).

The holes in the platform and return panel serve as a chase for the traveling cable.





Cabs

Page D1AAMUS.012
Version 01.20.2003
Approved SS/MM
Elevator Solutions Intl Inc.

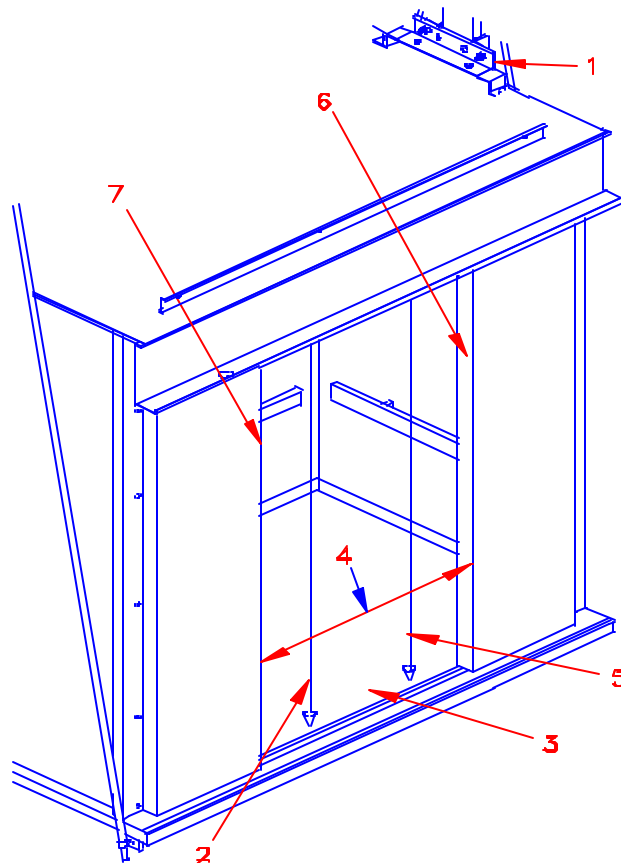
Operating instructions

3 Installation

3.5 Plumbing cab entrance

Plumb cab entrance as follows:

- 1 Place a plumb bob (2) in entrance of cab (3), and adjust cab stabilizers (1) until cab is plumb side-to-side (4).
- 2 Position a plumb bob (5) beside cab entrance (6) to plumb one side of entrance front-to-back.
- 3 Tighten the cab stabilizer (1) and adjust to hold cab in plumb position.
- 4 Plumb the opposite side of the entrance (7) from front-to-back. Adjust and tighten the cab stabilizer on opposite side to hold the cab in a plumb position.
- 5 Check the first side (6) again to make sure it is still plumb. Sometimes adjusting one side affects the plumb of the other side.
- 6 Tighten all hardware.
- 7 Position cab stabilizer (1) on mounting bracket and locate rubber pads in position against side stiles. Drill holes through stabilizer into mounting plate.
- 8 Secure cab stabilizers (1) to stile.
Do NOT use cab stabilizer to plumb cab.





Page D1AAMUS.013
Version 01.20.2003
Approved SS/MM
Elevator Solutions Intl Inc.



Page D1AAMUS.014
Version 01.20.2003
Approved SS/MM
Elevator Solutions Intl Inc.

