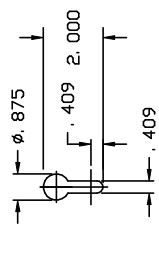
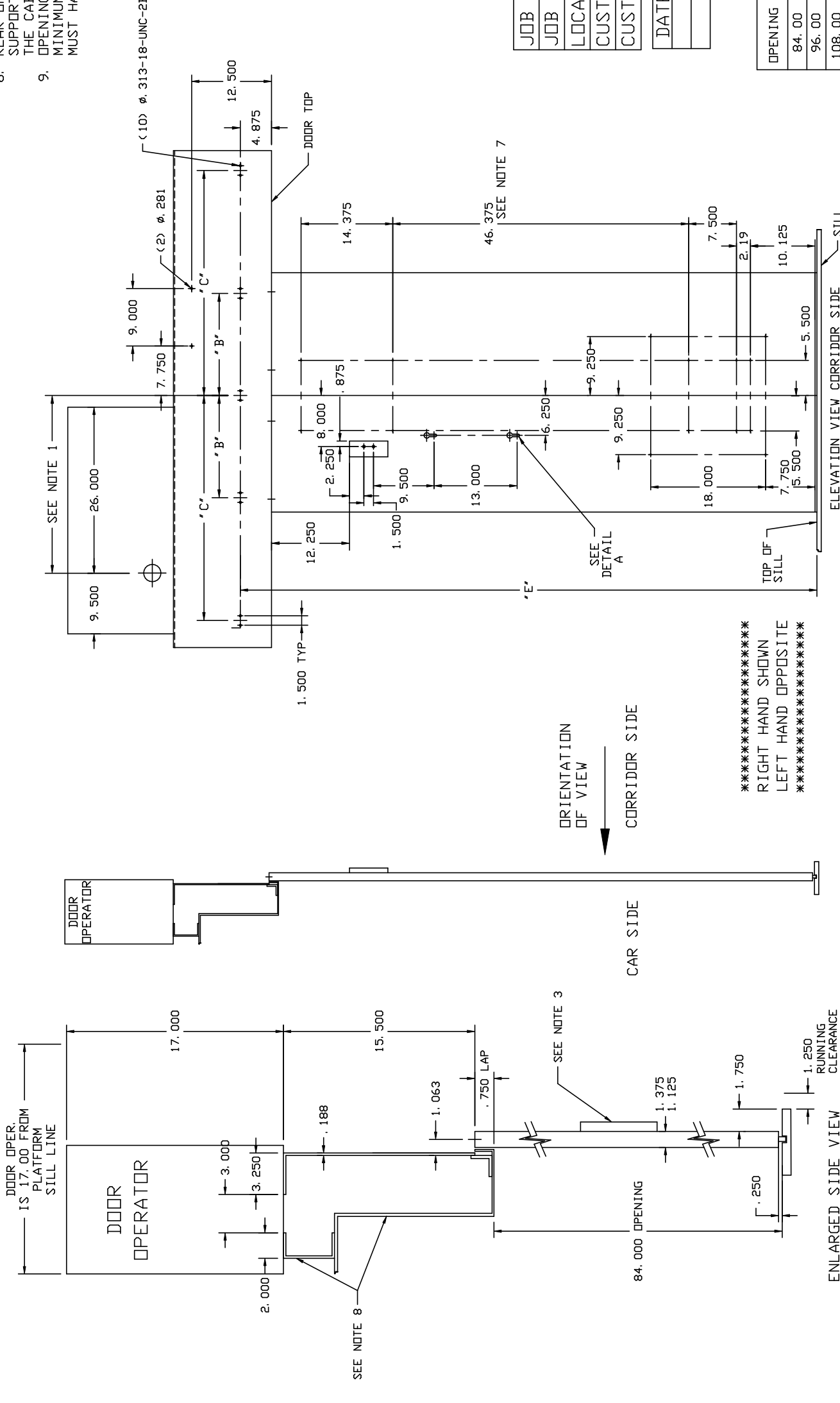
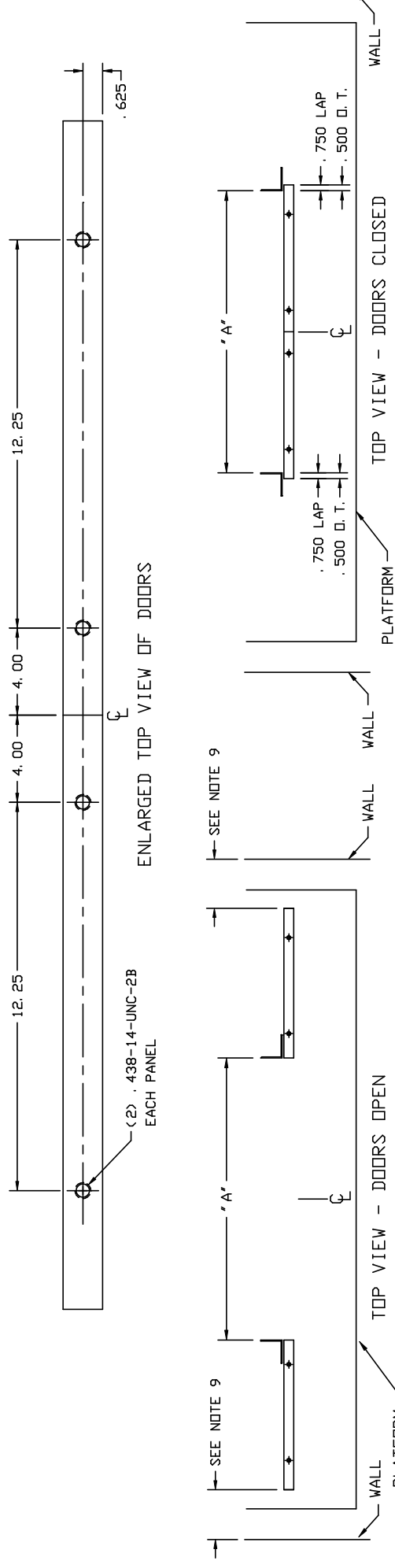


HEADER PLATE BY  
 CAB SUPPLIER  
 ESI INC.  
 SEE NOTE NO. 2

NOTES:

- APPROXIMATE LOCATION OF DOOR OPERATOR PIVOT SHAFT EQUALS .25 OF THE OPENING PLUS 18 INCHES FROM THE OPENING LINE. HEADER SUPPORT ANGLE DRILLINGS (REQD. WHEN ESI FURNISHES HEADER) STARTING ON CENTERLINE OF OPENING TAP MTG. ANGLE EVERY 10 INCHES IN BOTH DIRECTIONS. .250-20 UNC TAPS "C" PLUS 1 INCH TO LAST HOLE .75 OFF DOOR TOP.
- .75 x 2.5 x 6 EXT. REINF. WITH (2) .375-24 UNF TAPPED HOLES BY CAB SUPPLIER REQUIRED. MINIMUM 12 GA. INTERNAL REINFORCEMENT REQUIRED BEHIND ALL DOOR FACE HOLES AND KEYSLOTS.
- ALL HOLES UNLESS NOTED = .201 DIA. DIMENSIONS SHOWN ARE FOR A 96 INCH MAXIMUM CAB HEIGHT ONLY. IF CAB HEIGHT IS MORE THAN 96 INCHES CONTACT ESI.
- IF THE DOOR OPENING HEIGHT INCREASES OR DECREASES, THE 46.38 DIMENSION WILL INCREASE OR DECREASE THE SAME AMOUNT. ESI MUST BE NOTIFIED IF THE OPENING HEIGHT IS OTHER THAN 84 INCHES. REAR OPERATOR SUPPORT AND HEADER SUPPORT ANGLE TO BE SUPPLIED BY THE CAB SUPPLIER.
- OPENINGS 36" TO LESS THAN 42" MUST HAVE 4.75" MINIMUM CLEARANCE. OPENINGS 42" TO 48" MUST HAVE 3.25" MINIMUM CLEARANCE.



DETAIL A

"A" = OPENING WIDTH  
 "B" = (A/2) - 2  
 "C" = A - .75

|           |           |
|-----------|-----------|
| JOB NO.   |           |
| JOB NAME  |           |
| LOCATION  |           |
| CUSTOMER  |           |
| CUST. NO. |           |
| DATE      | ISSUED TO |
| QTY       |           |

| OPENING | DOOR HEIGHT  | 'E'     | PHOTOCELLS                         |
|---------|--------------|---------|------------------------------------|
| 84.00   | 84.50 ± .06  | 89.625  | DUAL BEAMS = 5 +29 INCHES OFF SILL |
| 96.00   | 96.50 ± .06  | 101.625 |                                    |
| 108.00  | 108.50 ± .06 | 113.625 |                                    |
| 120.00  | 120.50 ± .06 | 125.625 |                                    |

INCH DIMENSIONS  
 TOLERANCE UNLESS SHOWN

SOURCE/SPEC#/FINISH/WT

THIS INFORMATION IS CONFIDENTIAL AND REMAINS THE PROPERTY OF ELEVATOR SOLUTIONS INTERNATIONAL INC. ITS USE, REPRODUCTION, OR DISSEMINATION WITHOUT THE EXPRESS PERMISSION OF ESI, IS STRICTLY PROHIBITED.

PLDT SCALE: = 9.00

|      |      |       |
|------|------|-------|
| DATE | CH'K | DESCR |
| DATE | DATE | DATE  |

DRAWN BY LJP 07/07/04

**ELEVATOR SOLUTIONS INTERNATIONAL INC.**  
 ARKANSAS CITY, KANSAS

NAME ES-3  
 CENTER OPENING  
 CAR DATA

ESI BIRBERB  
 R0, 07-04

**C-1300a**