

NOTES:

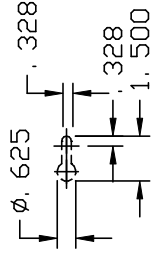
1. MINIMUM 12 GA. INTERNAL REINFORCEMENT REQUIRED BEHIND ALL KEYSLOTS.
2. STRIKE JAMB MUST NOT EXTEND ABOVE DOOR TOP.
3. ESI MUST BE NOTIFIED IF DOOR OPENING HEIGHT IS OTHER THAN 84.00 INCHES.
4. EMERGENCY KEYWAYS TO BE A ϕ . 438 THROUGH HOLE LOCATED AS SHOWN. IF DOOR HEIGHT CHANGES FROM A 84.50 INCH PANEL, CHANGE THE "S" DIMENSION THE SAME AMOUNT.
5. THE HOISTWAY HEADER TO BE SUPPLIED BY THE ENTRANCE MANUFACTURER.
6. MUST HAVE 2" MINIMUM CLEARANCE.

TABLE A

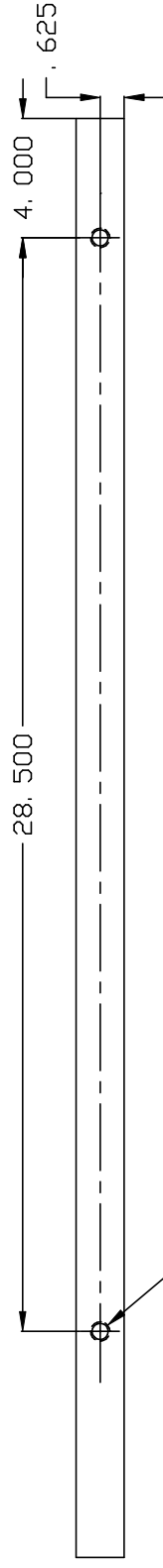
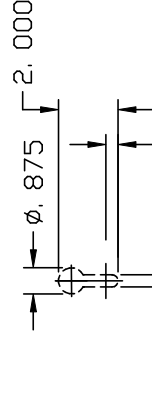
"A" = OPENING WIDTH < 42
 "B" = (2A-5) / 3

"A" = OPENING WIDTH \geq 42
 "B" = (2A-5) / 4

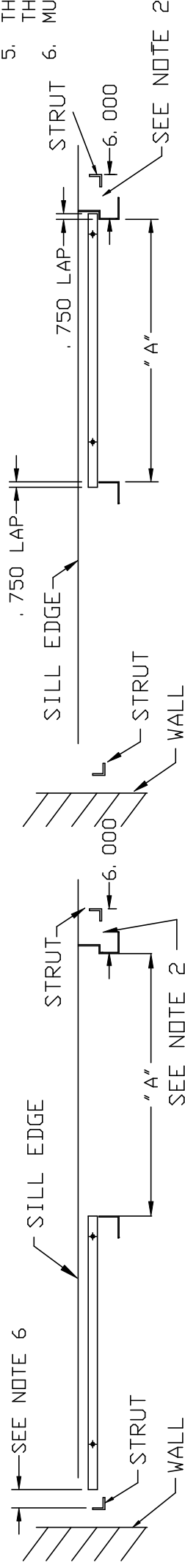
DETAIL A



DETAIL B



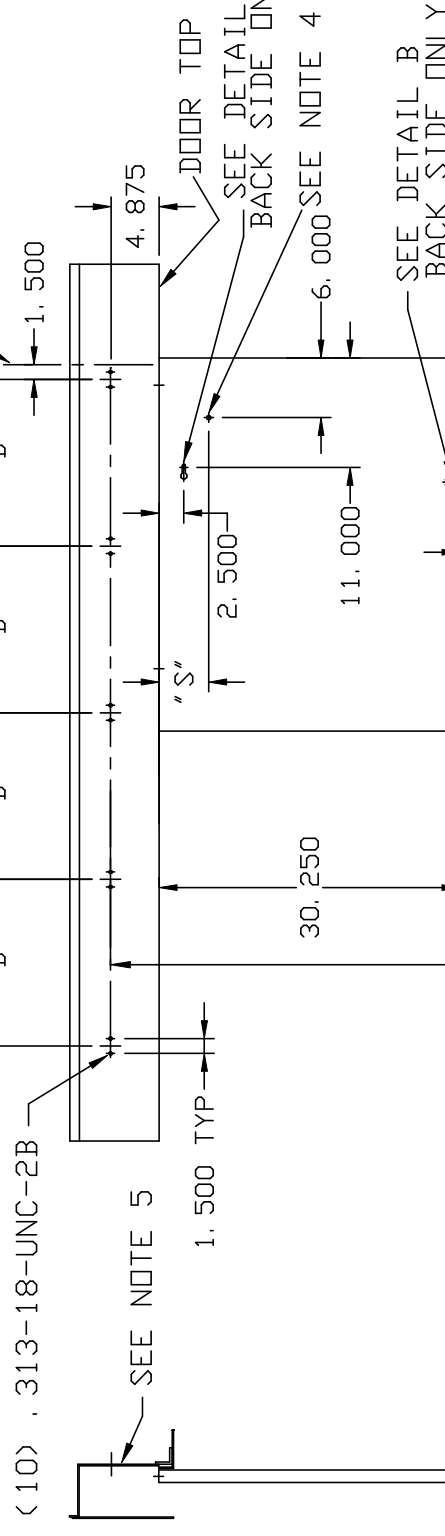
ENLARGED TOP VIEW OF DOOR



TOP VIEW - DOOR OPEN

TOP VIEW - DOOR CLOSED

OPENING LINE



ORIENTATION OF VIEW
 CORRIDOR SIDE

CAR SIDE

ELEVATION VIEW CORRIDOR SIDE

 RIGHT HAND SHOWN
 LEFT HAND OPPOSITE

JOB NO.	
JOB NAME	
LOCATION	
CUSTOMER	
CUST. NO.	

DATE	ISSUED TO

OPENING	DOOR HEIGHT	"S"	"E"
84.00	84.50 ±.06	3.50	89.625
96.00	96.50 ±.06	15.50	101.625
108.00	108.50 ±.06	27.50	113.625
120.00	120.50 ±.06	39.50	125.625

INCH DIMENSIONS		
TOLERANCE UNLESS SHOWN		
SOURCE/SPEC#/FINISH/WT		
THIS INFORMATION IS CONFIDENTIAL AND REMAINS THE PROPERTY OF ELEVATOR SOLUTIONS INTERNATIONAL INC. ITS USE, REPRODUCTION, OR DISSEMINATION WITHOUT THE EXPRESS PERMISSION OF ESI, IS STRICTLY PROHIBITED.		
PLOT SCALE: = 9.00		
DATE	CH'K	DESCR
DRAWN BY	DATE	
LJP	07/07/04	
ELEVATOR SOLUTIONS INTERNATIONAL INC. ARKANSAS CITY, KANSAS		
NAME		
ES-3 SINGLE-SLIDE HATCH DATA		
H-0300a		